



Viewings by appointment
0207 483 2611

abbey
properties

Boydell Court, NW8 6NL

£5,633 *fees apply

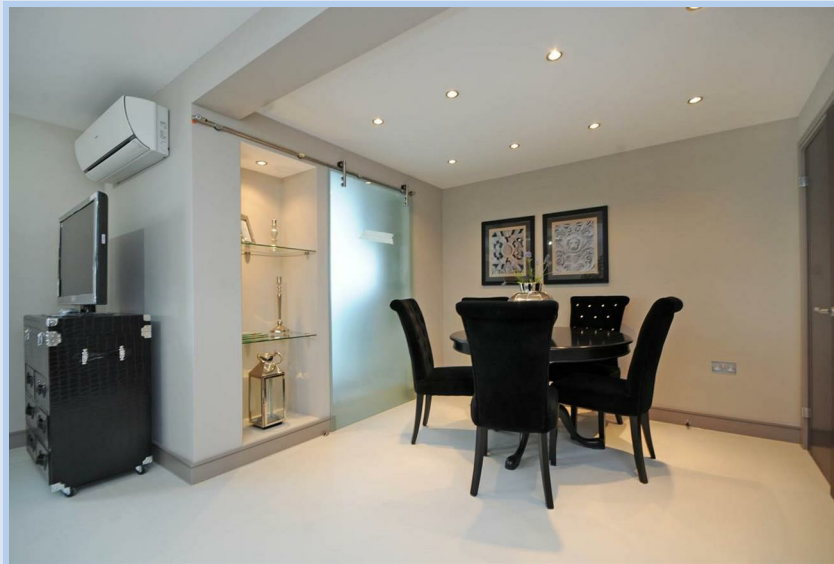


A recently refurbished three bedroom, three bathroom 1061sqft/99sqm apartment set on the 1st floor of this elegant 24h portered mansion block with landscaped communal gardens in St John's Wood.

- Brand new fully refurbished to the highest standard
- Bespoke Interior Design
- Wood flooring
- Double glazed
- German kitchen with stone worktops
- Bosch Appliances
- Separate Washer and Dryer
- Satellite – ready for Sky, Sky Plus, and Hotbird
- Fully tiled bathrooms
- Multi-jet power showers

Our agency are members of Property Mark, Client Money Protection and we hold an account with the Deposit Protection Scheme (ID number 1 8 7 0 9 7 4). Our trading name & registered office address is Wellington Estates Property Ltd, WorkLife, 174 Hammersmith Rd, London, W6 7JP company registration number 0 9 7 7 8 0 1 9 7. We charge no administration fees to tenants.

Tax Band: F
EPC Rating: C



abbey
properties

Approximate Gross Internal Area 1061 sq ft / 99 sq m



Although every attempt has been made to ensure accuracy, all measurements are approximate.
The floor plan's for illustrative purposes only and not to scale. Measured in accordance to RICS standards.
DE-PHOTOGRAPHY.NET